

Alert number

0345/09



Notifying country **Germany**

Product category **Cosmetics**

Type **Consumer**

Product **Eyeliner**

Brand **Hashmi Kohl Aswad**

Type / number of model **Batch number: SA-17/07 (blister pack)**

Product description **Black powder in gold plastic container with screw top and blister packaging**

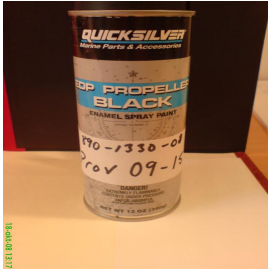
Risk type **Chemical**

Risk description **The product poses a chemical risk because it contains toxic heavy metals and in particular 774425 mg/kg of lead. The product does not comply with the Cosmetics Directive.**

Country of origin **Pakistan**

Measures taken by economic operators **Other : Voluntary withdrawal from the market. Sales ban ordered by the authorities. A press release has been issued.
Other**

Alert number **0344/09**



Notifying country **Sweden**

Product category **Chemical products**

Type **Consumer**

Product **Spray paint - Enamel spray paint EDP Propeller Black**

Brand **Quicksilver**

Type / number of model **Part no: 92-802878Q50, EAN-code: 74506103985**

Product description **Enamel spray paint in a can (Net wt 12 oz / 340 g). The can is marked: "Quicksilver Marine parts & accessories", "EDP Propeller Black" and contains warnings about flammable contents.**

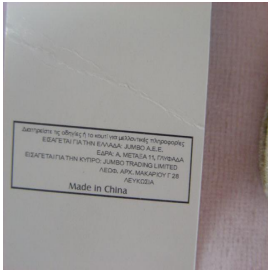
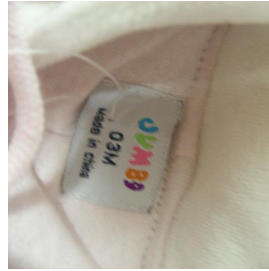
Risk type **Chemical**

Risk description **The product poses a chemical risk because it contains 2.8% toluene. According to the Chemical Restrictions Directive 76/769/EEC, in adhesives intended for sale to the general public, toluene should not be placed on the market or used as a substance or constituent of preparations in a concentration equal to or higher than 0.1% by mass. Toluene is classified as toxic for reproduction.**

Country of origin **United States**

Measures taken by economic operators **Other : Voluntary withdrawal from the market by the importer.
Other**

Alert number **0343/09**



Notifying country **Bulgaria**

Product category **Clothing, textiles and fashion items**

Type **Consumer**

Product **Baby's overalls**

Brand **Jumbo**

Type / number of model **9611**

Barcode **0259194000031**

Product description **Baby's overalls with a hood containing cords, intended for children aged 0-3, with a motif in the form of a teddy bear on the front decorated with 5 small glass stones and 2 glass hearts. There is a label attached to the product containing the following information: "Jumbo, 03m, Made in China, ΜΗΝΩΝ" and further information in a foreign language.**

Risk type **Choking
Strangulation**

Risk description

The product poses a risk of: - choking because the stones and the hearts may detach from the overall and they fit completely into the small parts test cylinder; - strangulation due to the presence of drawstrings in the hood area. The product does not comply with the relevant European standard EN 14682, according to which garments intended for young children aged from birth to age 7 years shall not be designed, manufactured or supplied with drawstrings, functional cords or decorative cords in the hood or neck area.

Country of origin

People's Republic of China

Measures ordered by public authorities

**Other : Sales ban and withdrawal from the market and recall from consumers ordered by the authorities.
Other**

Alert number **0342/09**



Notifying country **Slovakia**

Product category **Childcare articles and children's equipment**

Type **Consumer**

Product **Bicycle for young children**

Brand **SUPREMA**

Type / number of model **Fly 16" No. of frame MY 004**

Product description **Children's bicycle in a blue, red, white and yellow colour combination with a green basket in the front, two 16" wheels with mudguards and 2 additional small stabiliser side-wheels, 1 speed, back pedal brake on the rear wheel, carrier on the back, marking "SUPREMA".**

Risk type **Injuries**

Risk description **The product poses a risk of injuries because: - the handlebar grips are not sufficient and their ends are not protected. This could cause the child's hands to slip from the handlebars and lead to a fall while riding, - the bicycle is not equipped with a chain-guard that fully shields the chain, - the stabiliser wheels do not pass the longitudinal load test which could result in loss of stability. The product does not comply with the relevant European standard EN 14765.**

Country of origin **Czechia**

Measures ordered by public authorities **Other : Sales ban and withdrawal from the market and recall from consumers ordered by the authorities.
Other**

Alert number **0341/09**



Notifying country **Spain**

Product category **Lighting chains**

Type **Consumer**

Product **Christmas light chain**

Brand **Galerías Lorens**

Type / number of model **Lot: 12538**

Product description **Four different types of Christmas light chains. The packaging is a cardboard box with writing in Chinese.**

Risk type **Electric shock**

Risk description **The product poses a risk of electric shock because of: - inadequate resistance to humidity, - inadequate insulation resistance and electric strength, - inadequate construction of external and internal wiring. The product does not comply with the Low Voltage Directive and the relevant European standard EN 60598.**

Country of origin **People's Republic of China**

Measures ordered by public authorities **Other : Import rejected by the customs authorities.
Other**

Alert number **0340/09**



Notifying country **Latvia**

Product category **Lighters**

Type **Consumer**

Product **Novelty lighters - SPORT**

Brand **KELE**

Type / number of model **Unknown**

Product description **Lighters of various colours with flashing lights when ignited, with inscription "SPORT" on one side.**

Risk type **Burns
Fire**

Risk description **This product poses a risk of fire and burns because flashing light on lighters is attractive to children particularly those under the age of 51 months who may confuse it with a toy. The product does not comply with the Commission Decision 2006/502/EC which prohibits placing on the market of novelty lighters.**

Country of origin **People's Republic of China**

Measures ordered by public authorities **Other : Sales ban ordered by the authorities.
Other**

Alert number **0339/09**



Notifying country **Czechia**

Product category **Toys**

Type **Consumer**

Product **Children's bike cycle - Super Power 007**

Brand **Super Power 12**

Type / number of model **Item 055**

Product description **Bike for children with backrest, steel frame, plastic pedals, plastic chain-guard, steel front and rear hub that are without marking and the wheel rim too. It has front shoe brake and the rear drum brake type TAIZHENG and plastic brake handles. Mudguards of steel, balance wheels, plastic basket in front of handle-bar, bandage on cross-bar, bell, back mirror.**

Risk type **Injuries**

Risk description **The product poses a risk of injuries because of: - the braking effect of the brakes is not sufficient, - the handle diameter of the handle-bar is 28 mm whereas 40 mm is required, - the handle-bar does not withstand the impact test of 15 Nm but only fulfils 10 Nm, - the upper edge of the saddle backrest is 250 mm while it should not exceed 125 mm, - the saddle column does not withstand the impact test, - the chain guard does not cover the inner side of sprocket and join points of chain and sprocket. The product does not comply with the Toys Directive and the relevant European standard EN 14765.**

Country of origin **People's Republic of China**

Measures ordered by public
authorities

**Other : Sales ban and withdrawal from the market ordered
by the authorities.
Other**

Alert number

0338/09



Notifying country	United Kingdom
Product category	Electrical appliances and equipment
Type	Consumer
Product	AC-DC adaptor - Mobile Phone 3in1 Charger and USB Power Supply
Brand	Skytronic or Mercury
Type / number of model	421.746-1000mA USB Power Supply -8715693153637. 421.740-500mA USB Power Supply-8715693101508. 421.734-Mobile Phone 3in1 Charger Set-15693100433. 421.735-Mobile Phone 3in1 Charger v2-715693181951.
Product description	1000mA USB Power Supply. 500mA USB Power Supply. Mobile Phone 3in1 Charger Set. Mobile Phone 3in1 Charger v2. All items packed in sealed blister packaging.
Risk type	Electric shock
Risk description	The product poses a risk of electric shock because: - a loose wire may reduce creepage distances and clearances with the risk of electric shock, - the adaptor had inadequately sized pins. This could cause damage to the socket with the risk of overheating or arcing within the socket. The product does not comply with the Low Voltage Directive and relevant European standard EN 60950.
Country of origin	People's Republic of China
Measures taken by economic operators	Other : Voluntary withdrawal from the market by the importer. Other

Alert number **0337/09**

Notifying country **Germany**

Product category **Motor vehicles**

Type **Consumer**

Product **Passenger car - Xsara Picasso**

Brand **Citroen**

EC-type approval/model **Type C***** EU type approval e2* 98/14* 0153 * 18**

Product description **Concerned vehicles were built between 31 March 2008 and 10 April 2008, with following vehicle identification numbers: VF7CH9HXC8L501828 to VF7CHNFUC98296631.**

Risk type **Injuries**

Risk description **The product poses a risk of injuries because the front right-hand seat console of the vehicles may be inadequately welded. In the event of an accident this could reduce the effectiveness of the restraint system.**

Country of origin **Germany**

Measures taken by economic operators **Other : Voluntary corrective actions taken by the manufacturer.
Other**

Products were found and measures were taken also in **Spain
Greece
Hungary
The Netherlands
Portugal
Sweden
Slovenia**

Alert number **0336/09**

Notifying country **United Kingdom**

Product category **Childcare articles and children's equipment**

Type **Consumer**

Product **Playpen - Soft Sided/Fabric Playpen**

Brand **Lindam**

Type / number of model **Model Number LD123 & LD123N, bar Code 5019090443739 & 5019090444835. All product purchased prior to 9 February 2009.**

Product description **Fabric sided playpen with separate mat. Provided in either brown box or white poster box.**

Risk type **Choking**

Risk description **The product poses a risk of choking because small bolts on playpen may come loose, which fit into the small parts cylinder. Several incidents reported.**

Country of origin **People's Republic of China**

Measures taken by economic operators **Other : Voluntary withdrawal from the market and recall from consumers by the importer.
Other**

Products were found and measures were taken also in **Spain**

Alert number **0335/09**



Notifying country **France**

Product category **Toys**

Type **Consumer**

Product **Modelling clay - Polyform oven-bake clay**

Brand **Sculpey III**

Type / number of model **Reference 573 or 521 depending on colour. Barcode 1589111521 - 1589111573**

Product description **Rectangular slabs (4.5 x 6 x 2 cm) of 57 g in various colours. Warning: "suitable only for children over the age of 8 years - to be used under adult supervision. Read the instructions before use, follow them, and keep them for reference."**

Risk type **Chemical**

Risk description **The product poses a chemical risk because it contains more than 0.1% by weight of di-n-octyl phthalate (DNOP), respectively 2.1% and 2.3% in the yellow and green clays. Children could put these materials into their mouths. According to the Chemical Restrictions Directive 76/769/EEC, certain phthalates in toys are prohibited.**

Country of origin **United States**

Measures taken by economic operators **Other : Voluntary withdrawal from the market. Other**

Products were found and measures were taken also in **Belgium**

Alert number **0334/09**

Notifying country **Germany**

Product category **Motor vehicles**

Type **Consumer**

Product **Passenger car - Alfa Romeo 920**

Brand **Alfa Romeo**

EC-type approval/model **Type 920, EC type approval: e1*KS*0012*00**

Product description **The vehicles in question were manufactured between December 2007 and May 2008 with the VIN between ZAR92000000034064 ¿ and ¿038946.**

Risk type **Injuries**

Risk description **The product poses a risk of injuries because the weak screw joints can cause the control arms to become loose, consequently damaging and destroying them. The driver can lose control over the vehicle.**

Country of origin **Germany**

Measures taken by economic operators **Other : Voluntary corrective actions taken by the manufacturer.
Other**

Alert number **0333/09**



Notifying country **France**

Product category **Clothing, textiles and fashion items**

Type **Consumer**

Product **Ladies' shoes**

Brand **Alicia Shoes**

Type / number of model **ART. N°H0406**

Product description **Ladies court shoes, black or brown, synthetic upper, dyed leather insole (brown, black or white, coordinated with the colour of the upper), synthetic lining, plastic sole, packaged in the original box containing sachets of dessicant and antimould agent.**

Risk type **Chemical**

Risk description **The product poses a chemical risk because of the presence of: 1. dimethylfumarate (DMF), - black model: 200 mg/kg, - brown model: 109 mg/kg. Dimethylfumarate is substances that considered being harmful, irritating and sensitising on contact with the skin, and its use as a biocide is not authorised; 2. chrome, - black model: 74 mg/kg, - brown model: 54 mg/kg. Chrome is considered being harmful, irritating and sensitising on contact with the skin. Incident reported**

Country of origin **People's Republic of China**

Measures taken by economic operators **Other : Voluntary stop of sales and withdrawal from the market by the importer.
Other**

Alert number

0332/09



Notifying country **Germany**

Product category **Lighting equipment**

Type **Consumer**

Product **Floor lamp - Floor uplight**

Brand **Tween Light**

Type / number of model **Tween Light HF-8779EB-3**

Product description **Floor uplight with reading lamp attached.- EAN 4 024506 312814, Item No 12019738, Colour: nickel;- EAN 4 024506 312821 Item No 12019752, Colour: brass**

Risk type **Electric shock**

Risk description **The product poses a risk of electric shock because of damaged insulation in the joint area. One incident reported. The product does not comply with the Low Voltage Directive.**

Country of origin **People's Republic of China**

Measures taken by economic operators **Other : Voluntary withdrawal from the market and recall from consumers by the importer.
Other**

Alert number **0331/09**



Notifying country **Slovenia**

Product category **Toys**

Type **Consumer**

Product **Dolls - Lovely friends**

Brand **Beauty girl**

Type / number of model **05V-001, P001, EAN 8134935502291**

Product description **Set of a boy and a girl with a plastic head, arms and legs.**

Risk type **Chemical**

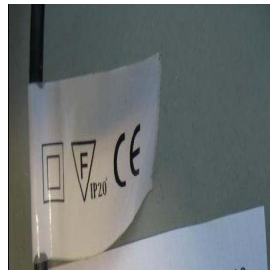
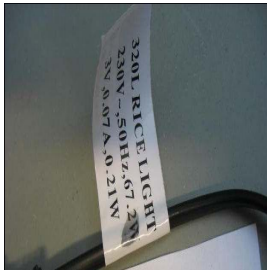
Risk description **The product poses a chemical risk because it contains from 20 to 25% by weight of bis (2-ethylhexyl) phthalate (DEHP) and 0.25 to 0.30 % by weight of dibutyl phthalate (DBP). According to the Chemical Restrictions Directive 76/769/EEC, certain phthalates in toys are prohibited.**

Country of origin **People's Republic of China**

Measures taken by economic operators **Other : Voluntary withdrawal from the market and recall from consumers by the distributor.
Other**

Alert number

0330/09



Notifying country **Slovakia**

Product category **Lighting chains**

Type **Consumer**

Product **Lighting chains - 320 L and 240 L Rice Light**

Brand **Unknown**

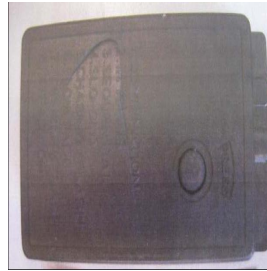
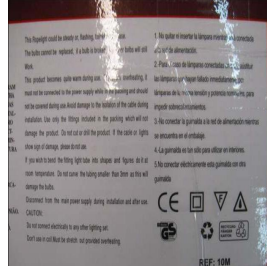
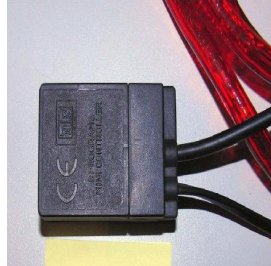
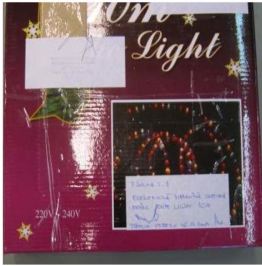
Type / number of model **1. 320L, EAN code: 6924324307055 2. 240L, EAN code: 6924324307055**

Product description **1. Lighting chain with 320 transparent bulbs equipped with a flasher unit, packed in a blue cardboard box with printed small yellow stars. Marking on packaging - 320L darabos, 8 FUNKCIOS, 230V~, 50Hz, 67,2W, 3V, 0,07A BUDAPEST CLEAR 2. Christmas lighting chain with 240 small varicoloured bulbs, equipped with a flasher unit, packed in a blue cardboard box with printed small yellow stars. Marking on packaging -240L darabos, 8 FUNKCIOS, 230V~, 50Hz, 58,8W, 4V, 0,07A BUDAPEST MULTICOLOUR**

Risk type **Electric shock**

Risk description	The products pose a risk of electric shock because: - the cover of the flasher unit does not pass the test, - the mains plug does not have the required parameters Diameters of wires as well as the length of the supply cable are not compliant, - the covering is not sufficient to protect against the electric shock. The product does not comply with the Low Voltage Directive and the relevant European standards EN 60598 and EN 55015.
Country of origin	Unknown
Measures ordered by public authorities	Other : Sales ban ordered by the authorities. Other

Alert number **0329/09**



Notifying country **Slovakia**

Product category **Lighting chains**

Type **Consumer**

Product **Lighting chain - Light 10M**

Brand **Unknown**

Type / number of model **Ref. 10M, EAN code: 2004112211352**

Product description **Sealed lighting chain as a plastic transparent red tube of 10 m length, packed in a rose-red cardboard box.**

Risk type **Electric shock**

Risk description **The product poses a risk of electric shock, because: - the flasher unit is not sufficiently anchored on to the cable, - the mains cable is not suitable for outdoor use, - the cover of the flashing device does not pass the test, - the product does not pass the test and may break between current-carrying parts and external insulation of flasher unit. The product does not comply with the Low Voltage Directive**

and the relevant European standard EN 60598.

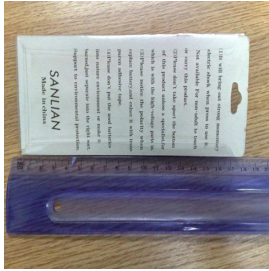
Country of origin

Unknown

Measures ordered by public authorities

**Other : Sales ban ordered by the authorities.
Other**

Alert number **0328/09**



Notifying country	Cyprus
Product category	Gadgets
Type	Consumer
Product	Funny goods - Shoking Peni
Brand	Sanlian
Barcode	5290504200999
Product description	Pen farces which discharge a strong voltage leading in electric shock. The front side of the package has the inscription: 'Shoking peni" , "SANLIAN" and Not available for non adult to touch or carry this product.
Risk type	Electric shock Health risk / other
Risk description	The product poses a risk of electric shock and a health risk because it generates pulses of very high voltage. It is dangerous for sensitive population groups like children, old people and people with pacemakers. The danger is bigger if the user holds the pen with both hands in a manner that the discharged voltage poses through the heart.
Country of origin	People's Republic of China
Measures ordered by public authorities	Other : Sales ban ordered by the authorities. Other

Alert number **0327/09**



Notifying country **The Netherlands**

Product category **Cosmetics**

Type **Consumer**

Product **Bath/shower cream - Sinnesrausch Erotik-Schaumbad**

Brand **Orion**

Type / number of model **SchSi 04**

Product description **250 ml bottle.**

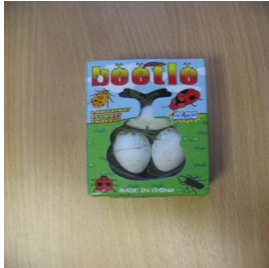
Risk type **Chemical**

Risk description **This product poses a chemical risk because it contains 128 µg/kg of N-nitrosodiethanolamine, which is classified as human carcinogen and prohibited by the Cosmetics Directive 76/768/EEC.**

Country of origin **Germany**

Measures ordered by public authorities **Other : Sales ban ordered by the authorities.
Other**

Alert number **0326/09**



Notifying country **Lithuania**

Product category **Toys**

Type **Consumer**

Product **Expanding toy**

Brand **Beetle**

Type / number of model **Unknown**

Product description **Three toys in form of egg, shell it made from white fragile material with perforations. The pet is hidden in an egg, which hatches and grows when immersing it into water and growing up it broke down shell of egg. The dimensions of the package: 85x60x30 mm, weight of toy: 20 g. The toy intended for kids elder than 36 month.**

Risk type **Choking**

Risk description **The product poses a risk of choking because after 72 hours in water the figure and parts of the expanding figure grow in size by more than 50%. If a child swallows this toy or part of it, contact with the saliva or gastric juices will cause the toy to expand which may cause asphyxia or gastrointestinal injuries. The product does not comply with the Toys Directive and the relevant European standard EN 71.**

Country of origin **People's Republic of China**

Measures ordered by public authorities **Other : Sales ban and withdrawal from the market and recall from consumers ordered by the authorities.
Other**

Alert number **[0325/09](#)**



Notifying country **Finland**

Product category **Clothing, textiles and fashion items**

Type **Consumer**

Product **Baby sets - Princess**

Brand **Play zone**

Product description **I. Art. 6852, Cotton-polyester shirt and pants, 86 cm, red-brown with text peguena - ficcais girl, II: Art. 6852, Cotton-polyester shirt and pants, 86 cm, pink-grey with text peguena - ficcais girl.**

Risk type **Injuries**

Risk description **The product poses a risk of injuries due to the presence of drawstrings in the waist area with free ends are tied. Drawstrings on the waist line are not attached to the garment and are free-moving. The product does not comply with the relevant European standard EN 14682.**

Country of origin **People's Republic of China**

Measures ordered by public authorities **Other : Import rejected by the customs authorities.
Other**

Alert number **0324/09**



Notifying country	Lithuania
Product category	Toys
Type	Consumer
Product	Expanding toy - Dinosaur egg - growing pet
Brand	Magic egg
Type / number of model	0803370
Barcode	5100008033705
Product description	Toy in form of egg. The shell is made from white fragile material with perforations. The green dinosaur is hidden in an egg, which hatches and grows when immersing it into water and growing up it broke down shell of egg. The dimensions of the egg approximately: 58x46 mm, weight: 29 g. The toy intended for kids elder than 36 months.
Risk type	Choking
Risk description	The product poses a risk of choking because after 72 hours in water the figure and parts of the expanding figure grow in size by more than 50%. If a child swallows this toy or part of it, contact with the saliva or gastric juices will cause the toy to expand which may cause asphyxia or gastrointestinal injuries. The product does not comply with the Toys Directive and the relevant European standard EN 71.
Country of origin	People's Republic of China

Measures ordered by public
authorities

**Other : Sales ban, withdrawal from the market and recall
from consumers ordered by the authorities.
Other**

Alert number **0323/09**

Notifying country **France**

Product category **Motor vehicles**

Type **Consumer**

Product **Scooter - GHOST 50**

Brand **TNT**

EC-type approval/model **GHOST 50**

Product description **V.I.N. from 1 May 2008 to 10 December 2008. Length: 1860 mm, Height of saddle: 780 mm, Dry weight: 94 kg.**

Risk type **Injuries**

Risk description **The product poses a risk of injuries because the piece fitting for the back suspension to the chassis can break due to too poor quality welding, which may lead to an accident.**

Country of origin **People's Republic of China**

Measures taken by economic operators **Other : Voluntary withdrawal from the market and recall from consumers by the importer.
Other**

Alert number **0322/09**

Notifying country **Greece**

Product category **Motor vehicles**

Type **Consumer**

Product **Passenger cars/vans - Spare wheel carrier**

Brand **Mercedes-Benz**

EC-type approval/model **Viano, Vito**

Product description **Model series 639 with RR6 and without RR8The recall concerns vehicles manufactured between July 2003 and May 2008, with the following vehicle identification numbers: - WDF63960313001522- WDF63981513434776**

Risk type **Injuries**

Risk description **The product poses a risk of injuries because the spare wheel, which is under the floor, may get lost as a consequence of a breakage in the spare wheel support, causing a risk of a road accident.**

Country of origin **Germany**

Measures taken by economic operators **Other : Voluntary corrective actions taken by the manufacturer.
Other**

Products were found and measures were taken also in **Malta
Portugal
Sweden**

Alert number **0321/09**



Notifying country **Norway**

Product category **Childcare articles and children's equipment**

Type **Consumer**

Product **Wooden playpen**

Brand **Basic**

Type / number of model **020100002**

Barcode **4042219119780**

Product description **A playpen made of white painted wood. 1 x 1 m. The base can be adjusted in two positions.**

Risk type **Injuries**

Risk description **The product poses a risk of injuries because, due to a too large hole in the base attachment, the base may fall down and the child can be hurt. One incident reported. The product does not comply with the relevant European standard EN 12227.**

Country of origin **Germany**

Measures taken by economic operators **Other : Voluntary withdrawal from the market by the importer.
Other**

Alert number **0320/09**



Notifying country **Czechia**

Product category **Childcare articles and children's equipment**

Type **Consumer**

Product **Wooden playpen**

Brand **Vertical**

Type / number of model **75x100 VERTICAL**

Product description **The playpen is made of solid wood varnished on surface. It consists of parts of frame construction, side parts with vertical bars with diameter of 16 mm. The packing is in cardboard box.**

Risk type **Injuries**

Risk description **The product poses a risk of injuries and in particular finger entrapment, head or neck entrapment in the sidebars because the Ø 65 mm cone can penetrate using force of 30N. The inner height of restraints is measured as 590 mm (minimum is 600 mm). The product does not comply with the relevant European standard EN 12227.**

Country of origin **Poland**

Measures ordered by public authorities **Other : Sales ban and withdrawal from the market ordered by the authorities.
Other**

Alert number **[0319/09](#)**



Notifying country **Sweden**

Product category **Chemical products**

Type **Consumer**

Product **Bicycle repair kit - Lappegrej med værktøj**

Brand **Cycletrack**

Barcode **5750003371434**

Product description **Bicycle repair kit containing glue, patches and tools. The word Cycletrack on a black tube of glue (10 ml). On the package there is "Lappegrej med værktøj" printed.**

Risk type **Chemical**

Risk description **The product poses a chemical risk because it contains 1.1% toluene. According to the Chemical Restrictions Directive 76/769/EEC, in adhesives intended for sale to the general public, toluene should not be placed on the market or used as a substance or constituent of preparations in a concentration equal to or higher than 0.1% by mass. Toluene is classified as toxic for reproduction.**

Country of origin **Taiwan**

Measures taken by economic operators **Other : Voluntary withdrawal from the market by the importer.
Other**

Products were found and measures were taken also in **Denmark**

Alert number **0318/09**



Notifying country **Sweden**

Product category **Chemical products**

Type **Consumer**

Product **Rubber solution - Twice cycle parts**

Brand **Hall Miba**

Type / number of model **7450026**

Barcode **7313227450026**

Product description **Bicycle repair kit containing glue and patches. The word Rubber Solution on a yellow tube of glue, approximately 20 ml.**

Risk type **Chemical**

Risk description **The product poses a chemical risk because it contains 0.3% toluene. According to the Chemical Restrictions Directive 76/769/EEC, in adhesives intended for sale to the general public, toluene should not be placed on the market or used as a substance or constituent of preparations in a concentration equal to or higher than 0.1% by mass. Toluene is classified as toxic for reproduction.**

Country of origin **Taiwan**

Measures taken by economic operators **Other : Voluntary withdrawal from the market by the retailer.
Other**

Alert number **0317/09**



Notifying country **Sweden**

Product category **Chemical products**

Type **Consumer**

Product **Bicycle repair kit - Equip Punkteringssats**

Brand **Equip**

Type / number of model **901205**

Barcode **7330597001528**

Product description **A kit for bicycle tyre repair. Rubber solution is in a yellow tube with a white cap, approximately 10 ml. On the tube there are prints, "Rubber Solution" "Thumbs" and a pictogram of a hand in red.**

Risk type **Chemical**

Risk description **The product poses a chemical risk because it contains 17% toluene. According to the Chemical Restrictions Directive 76/769/EEC, in adhesives intended for sale to the general public, toluene should not be placed on the market or used as a substance or constituent of preparations in a concentration equal to or higher than 0.1% by mass. Toluene is classified as toxic for reproduction.**

Country of origin **Taiwan**

Measures taken by economic operators **Other : Voluntary withdrawal from the market by the importer.
Other**

Alert number **0316/09**



Notifying country **Sweden**

Product category **Chemical products**

Type **Consumer**

Product **Bicycle repair kit - CB Reparationssats**

Brand **CB**

Type / number of model **3000585**

Barcode **7392584398400**

Product description **Bicycle tyre repair kit containing glue and patches in an orange box. Glue is in a yellow tube with red cap. The tube has three pictures: a red skull, a red flame and a black bicycle tyre. There is also a print "For all rubber repair".**

Risk type **Chemical**

Risk description **The product poses a chemical risk because it contains 0.3% toluene. According to the Chemical Restrictions Directive 76/769/EEC, in adhesives intended for sale to the general public, toluene should not be placed on the market or used as a substance or constituent of preparations in a concentration equal to or higher than 0.1% by mass. Toluene is classified as toxic for reproduction.**

Country of origin **Taiwan**

Measures taken by economic operators **Other : Voluntary withdrawal from the market by the importer.
Other**

Alert number **0315/09**



Notifying country	Sweden
Product category	Chemical products
Type	Consumer
Product	Spray paint - Light Grey Primer
Brand	Quicksilver
Type / number of model	92-802878Q52 (part)
Barcode	74506103989
Product description	Spray paint in a can (Net wt 12 oz / 340 g) The can is grey and have prints in white, black and blue. The prints read: 'Quicksilver Marine parts & accessories', 'Light gray primer', 'Spray paint' and warnings about flammable contents.
Risk type	Chemical
Risk description	The product poses a chemical risk because it contains 2.2% toluene. According to the Chemical Restrictions Directive 76/769/EEC, in adhesives intended for sale to the general public, toluene should not be placed on the market or used as a substance or constituent of preparations in a concentration equal to or higher than 0.1% by mass. Toluene is classified as toxic for reproduction.
Country of origin	United States
Measures taken by economic operators	Other : Voluntary withdrawal from the market by the importer.

Other

Alert number **0314/09**



Notifying country **France**

Product category **Clothing, textiles and fashion items**

Type **Consumer**

Product **Ladies' boots**

Brand **Miss Coquines**

Type / number of model **BOT0852**

Product description **Ladies' black leather boots. The upper and sole of the boots are made of a synthetic material and the lining is made of fabric and leather.**

Risk type **Chemical**

Risk description **The product poses a chemical risk because of the presence of 49 mg/kg of dimethylfumarate (DMF). Dimethylfumarate is a substance which has to be considered harmful, irritating and sensitising on contact with the skin, and its use as a biocide is not authorised. Incident reported.**

Country of origin **People's Republic of China**

Measures taken by economic operators **Other : Voluntary stop of sales and withdrawal from the market by the importer.
Other**